

Bright, roomy Lakeside is family-friendly

By Associated Designs

The textural interplay of stone veneer wainscoting and shake-textured siding can't help but draw eyes to this classic European cottage. While the Lakeside is designed for construction on a parcel of land that slopes down on the left, it could also be built on a level lot. The home's stone-trimmed entry arch adds to its charm.

Light spills into the vaulted entry through sidelights and a transom. An arched opening on the right leads into the dining room and on to the kitchen. The arched opening on the left takes you into a vaulted liv-

ing room with a gas fireplace. Proceeding forward, with a slight jog around the railed stairway and powder room, brings you into the family room. Windows fill most of the rear wall here and in the nook, where sliding glass doors open onto a side patio.

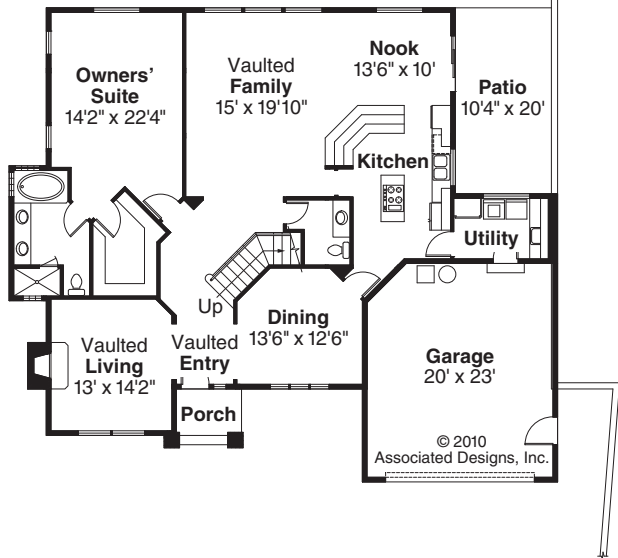
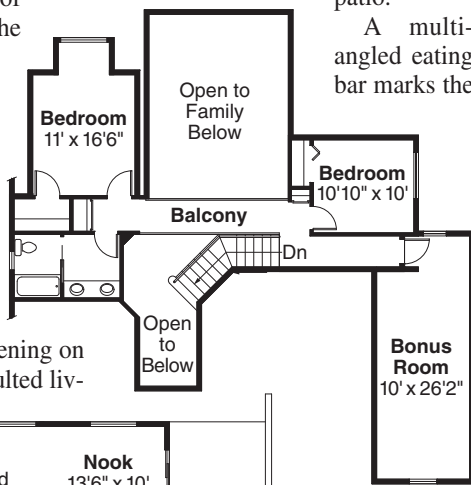
A multi-angled eating bar marks the

boundary between the nook and kitchen. Cabinets run along overhead, capping the open space below. The kitchen's central work island has a cook top. Laundry appliances, along with a roomy pantry and a utility sink, are right around the corner in a pass-through utility room that links with the garage.

The spacious owners' suite is also on the ground level. It boasts a deep walk-in closet and a roomy bathroom with a spa tub and double vanity. Soft light filters in through glass blocks on two sides of the deep spa tub.

Upstairs, a railed balcony cuts across the upper air space of the Lakeside's vaulted entry and family room below. A bedroom and a deep, unfinished bonus room are to the right, while a two-section bathroom and a bedroom with a rectangular windowed alcove are on the left.

For a review plan, including scaled floor plans, elevations, section and artist's conception, send \$25 to Associated Designs, 1100 Jacobs Dr., Eugene, OR 97402. Please specify the Lakeside 10-551 and include a return address when ordering. A catalog featuring more than 550 home plans is available for \$15. For more information, call (800) 634-0123, or visit our website at www.AssociatedDesigns.com.



Lakeside
PLAN 10-551

First Floor	1905 sq.ft.
Second Floor	597 sq.ft.
Living Area	2502 sq.ft.
Bonus Room	283 sq.ft.
Garage	477 sq.ft.
Dimensions	59' x 51'

2000 SERIES
www.AssociatedDesigns.com