

Fern View is spacious yet economical

By Associated Designs

Open and welcoming, the Fern View's front porch spans the front facade of this contemporary ranch-style home. Slender posts provide graceful accents.

Having a basically rectangular footprint makes this home economical to build, heat and maintain. For young families, this makes a stunning starter home. For empty nesters it promises lower maintenance chores and costs without any

Fern View
PLAN 30-766
 Living Area 1884 sq.ft.
 Garage 572 sq.ft.
 Dimensions 60' x 52'
1000 SERIES
www.AssociatedDesigns.com

downsizing of lifestyles. It could be furnished with three bedrooms or have two bedrooms and a study/home office, whichever suits.

Light spills into the vaulted entry though a sidelight plus a row of panes near the top of the door. A coat closet is on the left, just before the entry hall angles off in that direction. Double doors open into a window-bright room that could be

a bedroom, home office or study.

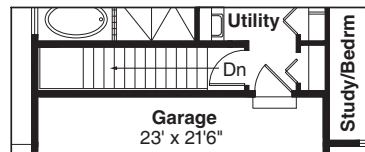
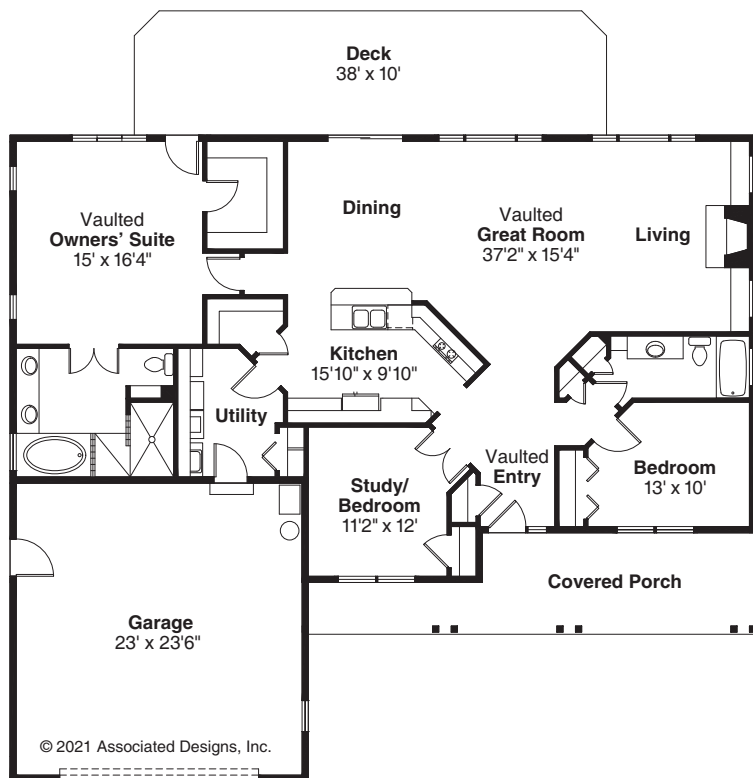
Continue to the left and you step into the kitchen; going straight ahead brings you to the vaulted great room, after passing the bedroom and bathroom on the right. Linen and towel closets are tucked into alcoves there.

Light washes into the vaulted great room through wide windows that fill most of the rear wall, plus the slender windows flanking the fireplace. Sliding glass doors in the dining area open onto a wide patio.

Standing at the kitchen sink, you can look out across the raised eating bar into the great room, keep your eye on the patio, or enjoy watching seasonal changes outside. All appliances are built in, and a roomy walk-in pantry fills one corner. Laundry appliances are stacked right around the corner in the Fern View's pass-through utility room, which provides access to the garage.

The owners' suite is surprisingly luxurious for a home this size, boasting a spa tub, oversized shower and dual lav.

Associated Designs is the original source for the Fern View 30-766. For more information or to view other designs, visit www.AssociatedDesigns.com or call 800-634-0123.



Alternate Basement Stairs