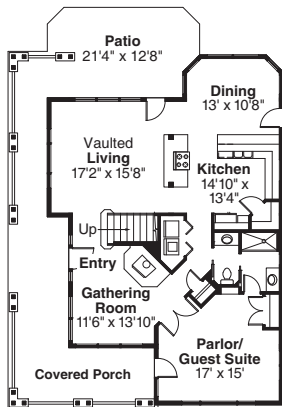
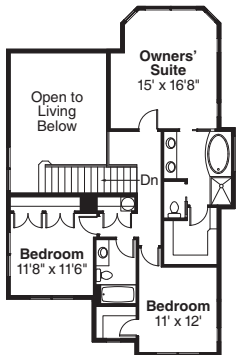
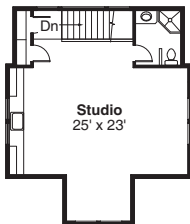
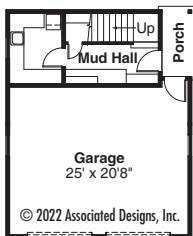


Slender column sets highlight the old-fashioned covered porch that wraps around three sides of this Craftsman house plan. Skylights, a wealth of windows, and a vaulted ceiling expand a living room that's open to the kitchen and bayed dining area. A gathering room with woodstove and a parlor/guest suite is also up front. For more details, log onto www.Home-Plan-Weekly.com, or call 1-800-634-0123.



Mapleton
PLAN 30-506

Living Area
2941 sq.ft.

2000 SERIES